

# **COMMERCE TOWNSHIP WATER TOWER**

March 28, 2012

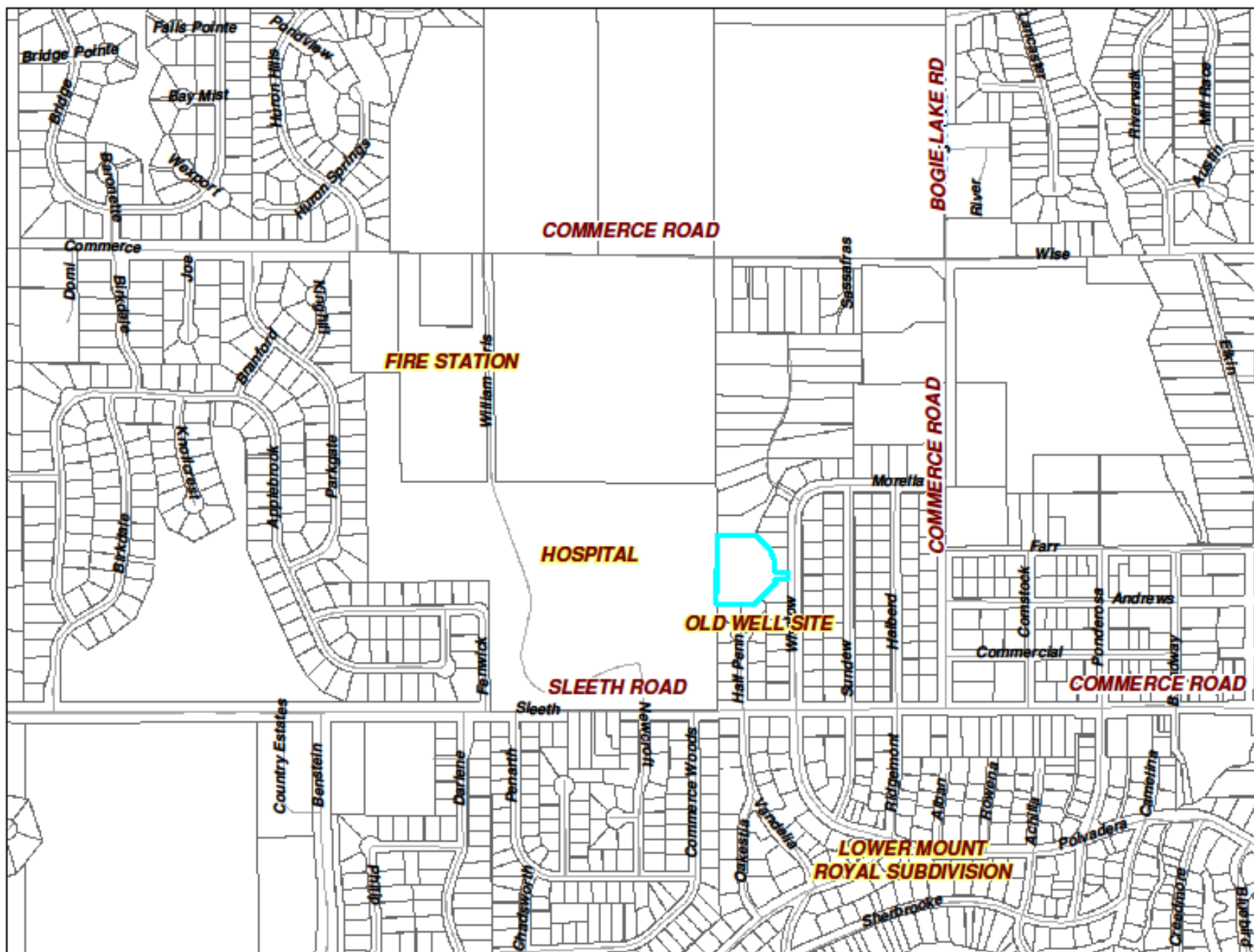
Upper Mount Royal Homeowner's  
Association Meeting

# COMMERCE TOWNSHIP WATER TOWER

- DWSD continues to increase rates to suburban customer's.
- Commerce Township pays some of the highest rates of all DWSD customers because of the distance and elevation from the source.
- In order to offset future rate increases, the Township has decided to install a water tower.

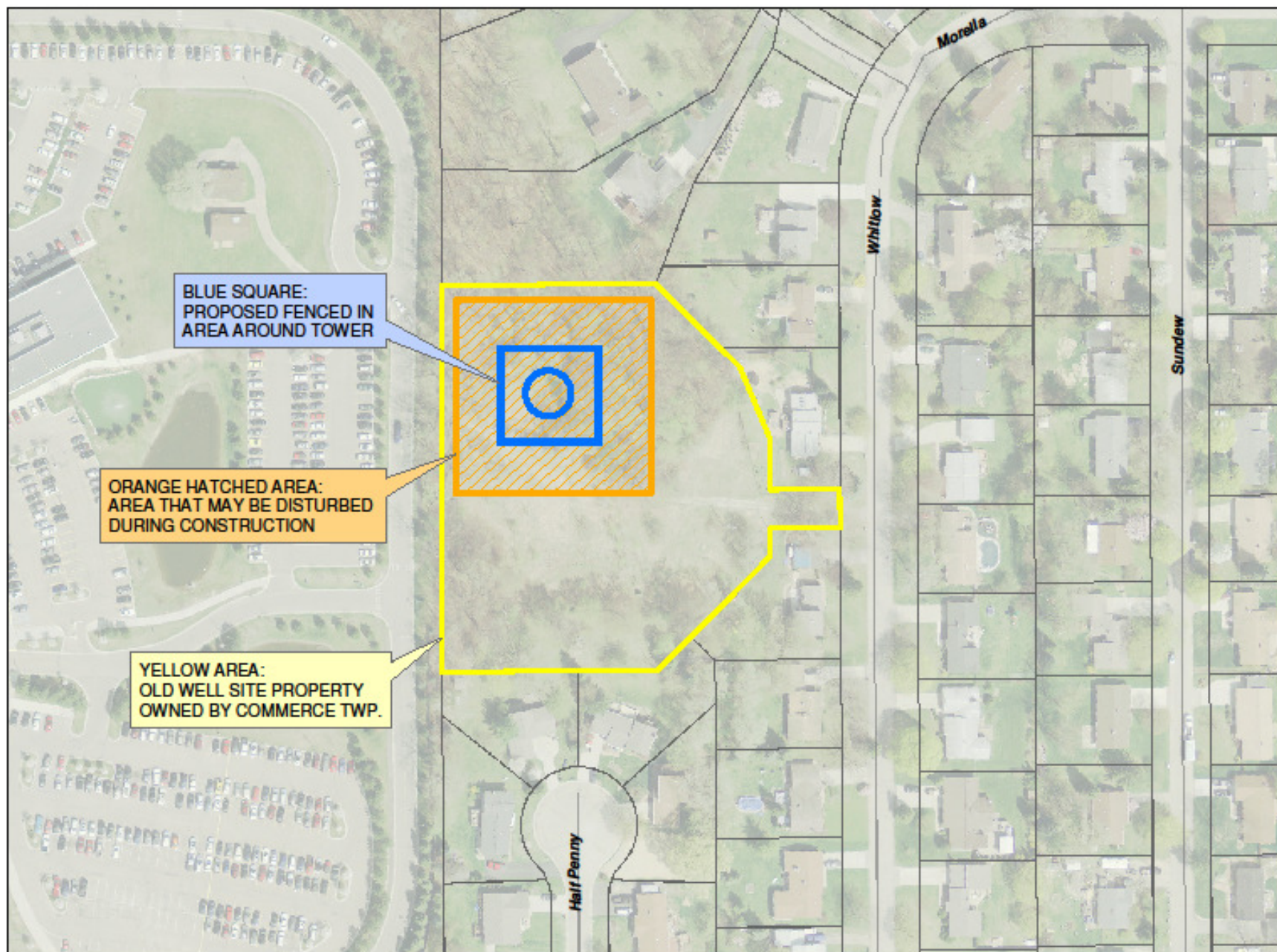
# WHY IS COMMERCE INSTALLING A WATER TOWER?

- This project will allow Commerce to be able to negotiate lower contract rates with DWSD.
- This will allow Commerce to keep water usage rate increases to a minimum.
- The water system will be more reliable.



# WHY IS THE WATER TOWER BEING INSTALLED AT THIS LOCATION?

- This is one of the highest locations in Commerce.
- The site is owned by Commerce Township.





# COMPOSITE WATER TOWER

100' DIAMETER  
TANK

50' DIAMETER  
COLUMN

145' TOTAL  
HEIGHT

# CONCEPTUAL PLAN



***LOOKING SOUTH FROM WHITLOW AND WHITLOW CT.***

# WATER TOWER CONSTRUCTION SCHEDULE

- The current schedule is to have the water tower in operation by the end of 2013.
- Weather will be the determining factor – construction will likely begin later this year and there may be a break in work during the winter months.
- We will send out a letter with additional information when it is available.

QUESTIONS  
OR  
COMMENTS?

Please feel free to contact me with  
any questions regarding this project:

Jason Mayer, PE  
Giffels-Webster Engineers, Inc.  
(248) 852-3100 office  
(248) 202-8803 cell  
[jmayer@giffelswebster.com](mailto:jmayer@giffelswebster.com)